

These recruitment tips were collated by EFNEP staff working in the Pacific Islands and Hawaii:



# RECRUITMENT

# Yapese - Recruitment Tips

- ▣ Go to elementary and high schools
- ▣ Women's groups
- ▣ Churches
- ▣ Head Start
- ▣ Community shelters





# Guam -Recruitment Tips

- ❖ Military Bases
- ❖ WIC and Public Health
- ❖ Churches
- ❖ Community Centers
- ❖ Shelters
- ❖ Grocery Stores



# American Samoa Recruitment Tips

- ❖ Talk to church groups, pastors, and community organizers.
- ❖ Talk to people at Samoan community groups, such as dance competitions, Cricket Clubs in the park, family and community gatherings (weddings etc)
- ❖ Make connections with local Samoans
- ❖ Holiday events when people get together, (guesthouses where people gather to celebrate and prepare for community meetings). In Hawaii this may be in church community centers.
- ❖ Toa Alii (Samoan chief group)



# Chuukese Recruitment Tips

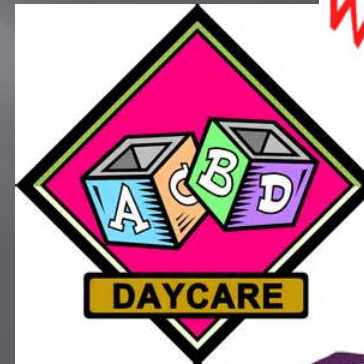
- ▣ Go to the church
- ▣ Ask the pastor to appoint a translator
- ▣ Get contact for that group





# Tinian (CNMI) Recruitment Tips

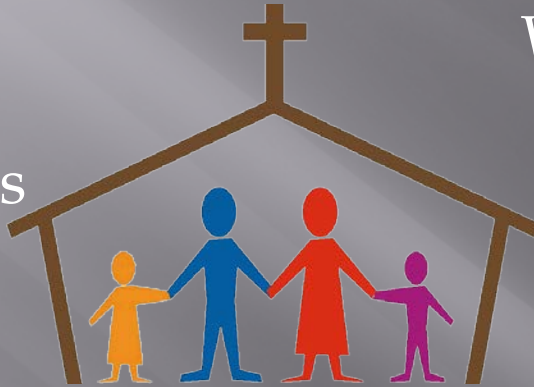
- ❖ Home Visits
- ❖ Look for groups that work with families
- ❖ Headstart/Daycare/Schools
- ❖ Check welfare agencies for newly moved families



# Marshallese Recruitment Tips

## WHERE?

- ▣ Churches
- ▣ Families
- ▣ Schools



## WHO?

- ▣ Pastors
- ▣ Woman of the house
- ▣ Liaisons

